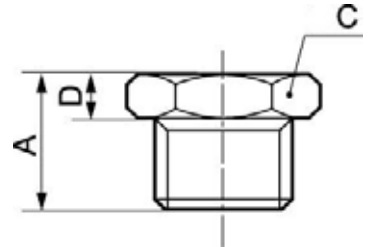


## FITTINGS EXTENDERS, PLUGS

### Hexagonal male plug



#### Min/max operating pressure

0 / 218 psi

Part number	Male thread	Female thread	Net weight (Kg)	Dim. A (inch)	Dim. C (inch)	Dim. D (inch)
A7 18	G1/8		0,007	0.39	0.67	0.16
A7 14	G1/4		0,0124	0.49	0.75	0.18
A7 38	G3/8		0,017	0.53	0.94	0.18
A7 203	1/2" NPT	NPT1/2	0	0,55	1777,2	
A7 204	3/4" NPT	NPT3/4	0	0,62	1677,72	